

DELDOT PROJECT NO. T202501101
 PEDESTRIAN ACCESS ROUTES AND SIDEWALK IMPROVEMENTS, NEW CASTLE COUNTY FY25-FY27
 DETERMINED WORK ORDER LOCATIONS



Work Order #3
 Milltown Road, Saint John Church Entrance to E Parris Drive

Work Order #2
 Old Capitol Trail, Walmsley Drive to Delaware Park Drive

Work Order #6
 Maryland Avenue, Boxwood Plaza Entrance to Brookside Drive and DuPont Road, Valley Road to Richardson Lane and Race Street and Old DuPont Road

Work Order #5
 N Market Street, 41st Street to Edgemoor Road

Work Order #7
 Edgemoor Road, Paladin Drive to Blue Rock Boulevard and Brandywine Boulevard, Edgemoor Road to River Road and River Road

Work Order #1
 New Castle Avenue, Paper Place to Ryan Avenue

Work Order #4*
 Ogletown Stanton Road, Old Churchmans Road to Stanton Christiana Road and Old Churchmans Road, Rockford Drive to Ogletown Stanton Road and Twin C Lane

Work Order #8*
 S Chapel Street, Pencader Plaza North Entrance to South Entrance

* DESIGN WAS COMPLETED USING AERIAL IMAGERY AND GIS LEVEL INFORMATION. TOPOGRAPHIC SURVEY WAS NOT COMPLETED AND WILL NOT BE PROVIDED FOR THESE LOCATIONS. THE CONTRACTOR WILL BE RESPONSIBLE FOR SURVEYING AND LAYING OUT THE PROPOSED IMPROVEMENTS USING THE ITEM 763622 - CONSTRUCTION ENGINEERING, PAR REHABILITATION.





INDEX OF SHEETS		
SECTION	SHEET DESCRIPTION	SHEET NO(S)
RKK	TITLE	1
RKK	PLAN SHEET INDEX	2
RKK	ADDENDA AND REVISIONS	3
RKK	LEGEND	4
RKK	NOTES	5
RKK	CONSTRUCTION PLANS (#)	6-11
RKK	GRADES AND GEOMETRICS #	12-23
RKK	CONSTRUCTION PHASING, M.O.T. AND EROSION CONTROL PLAN	24
RKK	SIGNALIZATION PLAN	25-26
RKK	RIGHT-OF-WAY PLAN	27-33

DESCRIPTION OF WORK:

T202501101 - Work Order #1 - New Castle Avenue, Paper Place to Ryan Avenue

The scope of work along New Castle Avenue includes the reconstruction of the existing non-compliant sidewalk (approximately 5,000 SF), curb ramps (approximately 2,500SF), and driveways. It also encompasses pavement striping, sign relocations, and signal upgrades at Lambson Lane within the project limits.

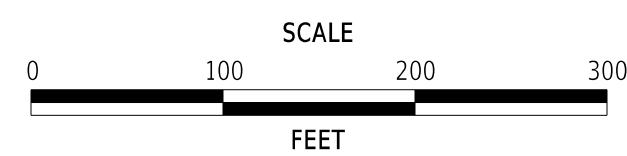
The work involves patching, milling and overlaying entrances, sealing cracks, and joint sealing. Additionally, approximately 850 LF of curb installation will be performed. Utilities will be adjusted vertically, including drainage manholes and drainage inlets.

Survey information, grades, and geometry sheets will be provided for this location.

The project duration is set for 60 calendar days.

HORIZONTAL/VERTICAL CONTROL DATA			
POINT NO.	NORTHING	EASTING	ELEV.
NEW1	621058.7690	618461.6480	54.47
NEW2	621471.9700	618666.3660	55.29
NEW3	621967.1137	618703.1819	50.67
NEW4	622349.4169	618899.9949	51.55

ADDENDA / REVISIONS



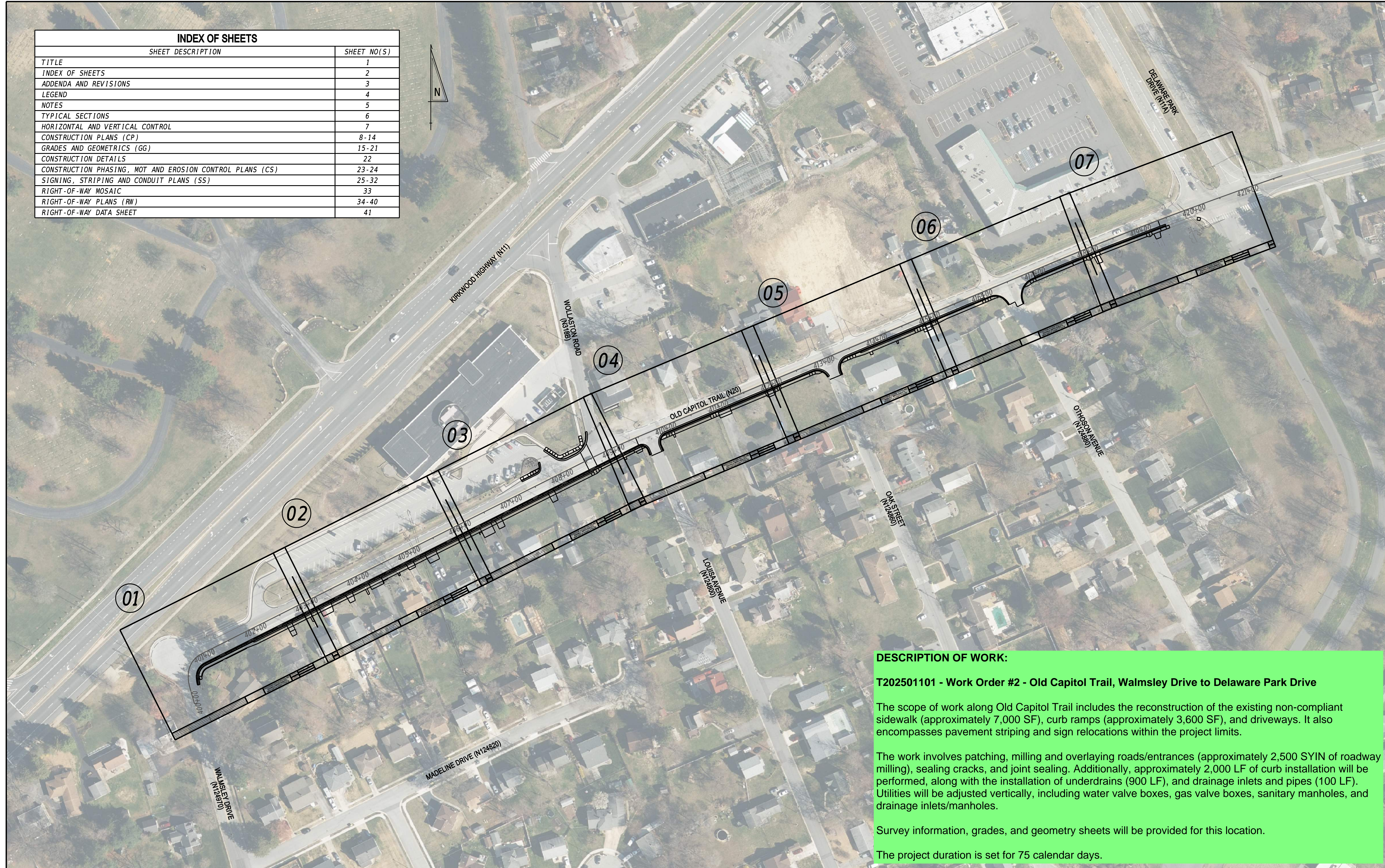
OPEN END PEDESTRIAN ACCESS ROUTES AND SIDEWALK IMPROVEMENTS, NEW CASTLE COUNTY FY25-FY27

CONTRACT	BRIDGE NO.	N/A
T202501101	DESIGNED BY:	M. MAYES
COUNTY	CHECKED BY:	M. GOUDY
NEW CASTLE		

**WORK ORDER #1
INDEX OF SHEETS**

SECTION
RKK
SHEET NO.
1

INDEX OF SHEETS	
SHEET DESCRIPTION	SHEET NO(S)
TITLE	1
INDEX OF SHEETS	2
ADDENDA AND REVISIONS	3
LEGEND	4
NOTES	5
TYPICAL SECTIONS	6
HORIZONTAL AND VERTICAL CONTROL	7
CONSTRUCTION PLANS (CP)	8-14
GRADES AND GEOMETRICS (GG)	15-21
CONSTRUCTION DETAILS	22
CONSTRUCTION PHASING, MOT AND EROSION CONTROL PLANS (CS)	23-24
SIGNING, STRIPING AND CONDUIT PLANS (SS)	25-32
RIGHT-OF-WAY MOSAIC	33
RIGHT-OF-WAY PLANS (RW)	34-40
RIGHT-OF-WAY DATA SHEET	41



DESCRIPTION OF WORK:

T202501101 - Work Order #2 - Old Capitol Trail, Walmsley Drive to Delaware Park Drive

The scope of work along Old Capitol Trail includes the reconstruction of the existing non-compliant sidewalk (approximately 7,000 SF), curb ramps (approximately 3,600 SF), and driveways. It also encompasses pavement striping and sign relocations within the project limits.

The work involves patching, milling and overlaying roads/entrances (approximately 2,500 SYIN of roadway milling), sealing cracks, and joint sealing. Additionally, approximately 2,000 LF of curb installation will be performed, along with the installation of underdrains (900 LF), and drainage inlets and pipes (100 LF). Utilities will be adjusted vertically, including water valve boxes, gas valve boxes, sanitary manholes, and drainage inlets/manholes.

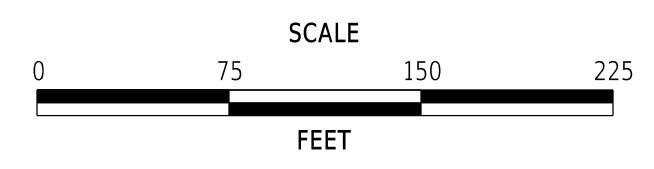
Survey information, grades, and geometry sheets will be provided for this location.

The project duration is set for 75 calendar days.

10/24/2024 2:43:57 PM \\P\PROJ\219056.0002\Highways\Cadd\WO#2 [2025]1501.dgn



ADDENDA / REVISIONS



**PEDESTRIAN ACCESS ROUTES AND
SIDEWALK IMPROVEMENTS,
NEW CASTLE COUNTY FY25-27**

CONTRACT T202501101	BRIDGE NO. N/A
COUNTY NEW CASTLE	DESIGNED BY: S. NICKEL
	CHECKED BY: M. STEIMER

**WORK ORDER #2
INDEX OF SHEETS**

SECTION WM
SHEET NO. 2

DESCRIPTION OF WORK:

T202501101 - Work Order #3 - Milltown Road, Saint John Church Entrance to E Parris Drive

The scope of work along Milltown Road includes approximately 7,800 SF of both the new installation of missing sidewalk and the reconstruction of the existing non-compliant sidewalk, curb ramps (approximately 1,500 SF), and driveways. It also encompasses pavement striping and sign relocations within the project limits.

The work involves patching as required for curb ramp construction. Additionally, approximately 420 LF of curb installation will be performed. Utilities will be adjusted horizontally for a guy wire and vertically for impacted telephone manholes.

Survey information, grades, and geometry sheets will be provided for this location.

The project duration is set for 45 calendar days.

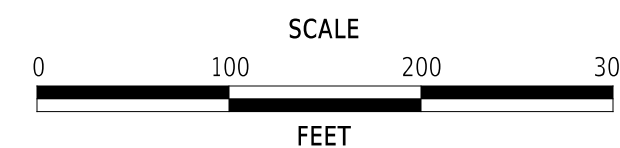


INDEX OF SHEETS	
SHEET DESCRIPTION	SHEET NO(S)
TITLE	1
INDEX OF SHEETS	2
ADDENDA AND REVISIONS	3
LEGEND	4
NOTES	5-6
TYPICAL SECTIONS	7
HORIZONTAL AND VERTICAL CONTROL	8
CONSTRUCTION PLANS (CP)	9-11
PERMANENT SIGN SCHEDULE	12
CONSTRUCTION DETAILS	13
GRADES AND GEOMETRICS	14-16
RIGHT-OF-WAY PLANS AND DATA SHEET	17-20

16-OCT-2024
 U:\Accounts\DEDOT\DEDOT2024 - DelDOT AGR1955F Task 8 NCC Sidewalk andDESIGN\CTDGNW03-MilltownIS01_NEW.dgn



ADDENDA / REVISIONS



**PEDESTRIAN ACCESS ROUTES
AND SIDEWALK IMPROVEMENTS
NEW CASTLE COUNTY FY25-FY27**

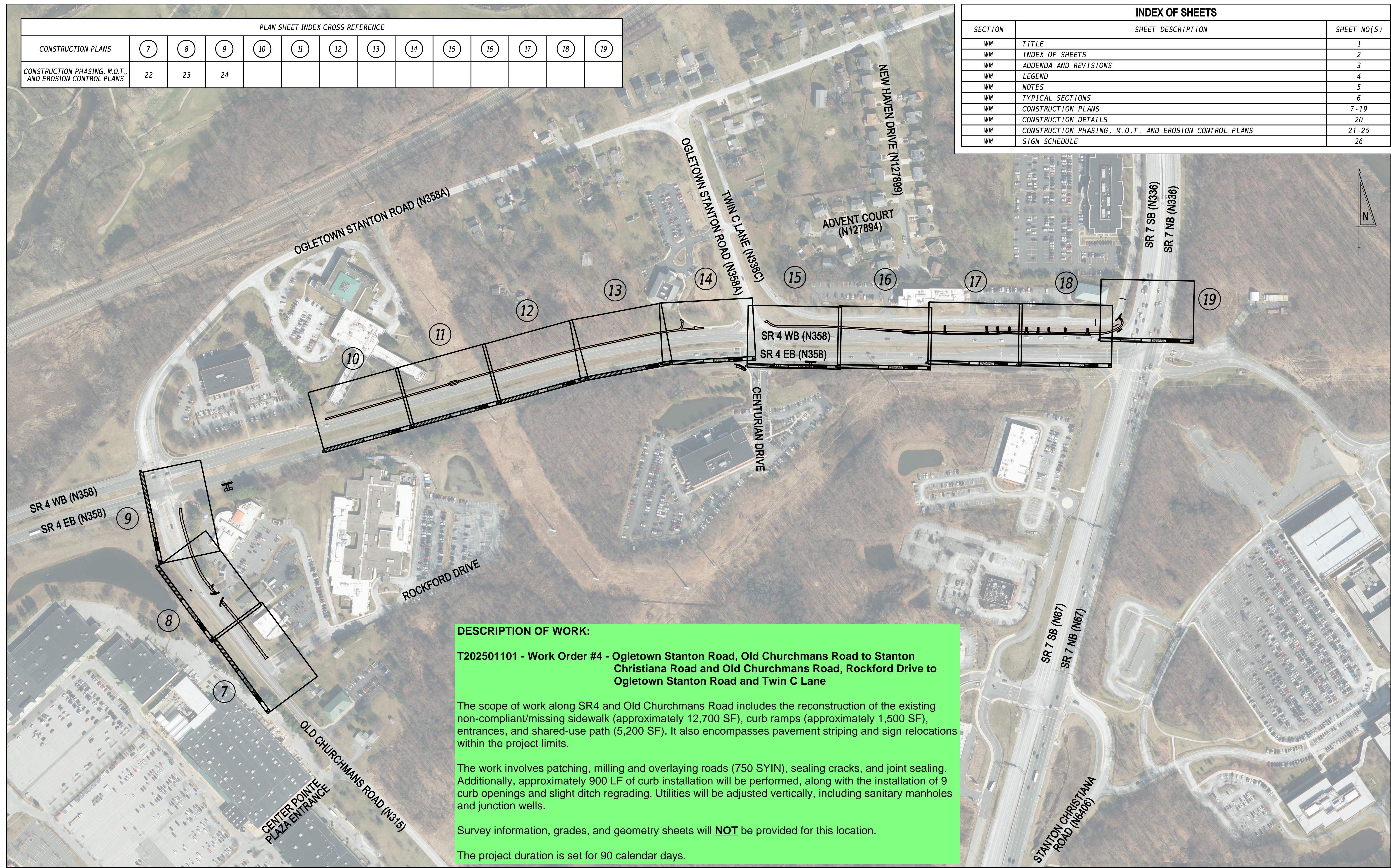
CONTRACT	BRIDGE NO.	N/A
T202501101	DESIGNED BY:	J. BRIONES
COUNTY	CHECKED BY:	O. GREEN
NEW CASTLE		

**WORK ORDER #3
INDEX OF SHEETS**

SECTION
PAI
SHEET NO.
2

PLAN SHEET INDEX CROSS REFERENCE													
CONSTRUCTION PLANS	7	8	9	10	11	12	13	14	15	16	17	18	19
CONSTRUCTION PHASING, M.O.T., AND EROSION CONTROL PLANS	22	23	24										

INDEX OF SHEETS		
SECTION	SHEET DESCRIPTION	SHEET NO(S)
WM	TITLE	1
WM	INDEX OF SHEETS	2
WM	ADDENDA AND REVISIONS	3
WM	LEGEND	4
WM	NOTES	5
WM	TYPICAL SECTIONS	6
WM	CONSTRUCTION PLANS	7 - 19
WM	CONSTRUCTION DETAILS	20
WM	CONSTRUCTION PHASING, M.O.T. AND EROSION CONTROL PLANS	21-25
WM	SIGN SCHEDULE	26



DESCRIPTION OF WORK:

T202501101 - Work Order #4 - Ogletown Stanton Road, Old Churchmans Road to Stanton Christiana Road and Old Churchmans Road, Rockford Drive to Ogletown Stanton Road and Twin C Lane

The scope of work along SR4 and Old Churchmans Road includes the reconstruction of the existing non-compliant/missing sidewalk (approximately 12,700 SF), curb ramps (approximately 1,500 SF), entrances, and shared-use path (5,200 SF). It also encompasses pavement striping and sign relocations within the project limits.

The work involves patching, milling and overlaying roads (750 SYIN), sealing cracks, and joint sealing. Additionally, approximately 900 LF of curb installation will be performed, along with the installation of 9 curb openings and slight ditch regrading. Utilities will be adjusted vertically, including sanitary manholes and junction wells.

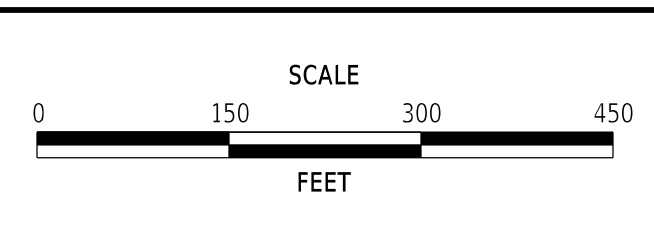
Survey information, grades, and geometry sheets will **NOT** be provided for this location.

The project duration is set for 90 calendar days.

10/24/2024 12:44:59 PM
 M:\PROJ\219056.0002\Highways\Cadd\W0#4 [2023]1501.dgn



ADDENDA / REVISIONS



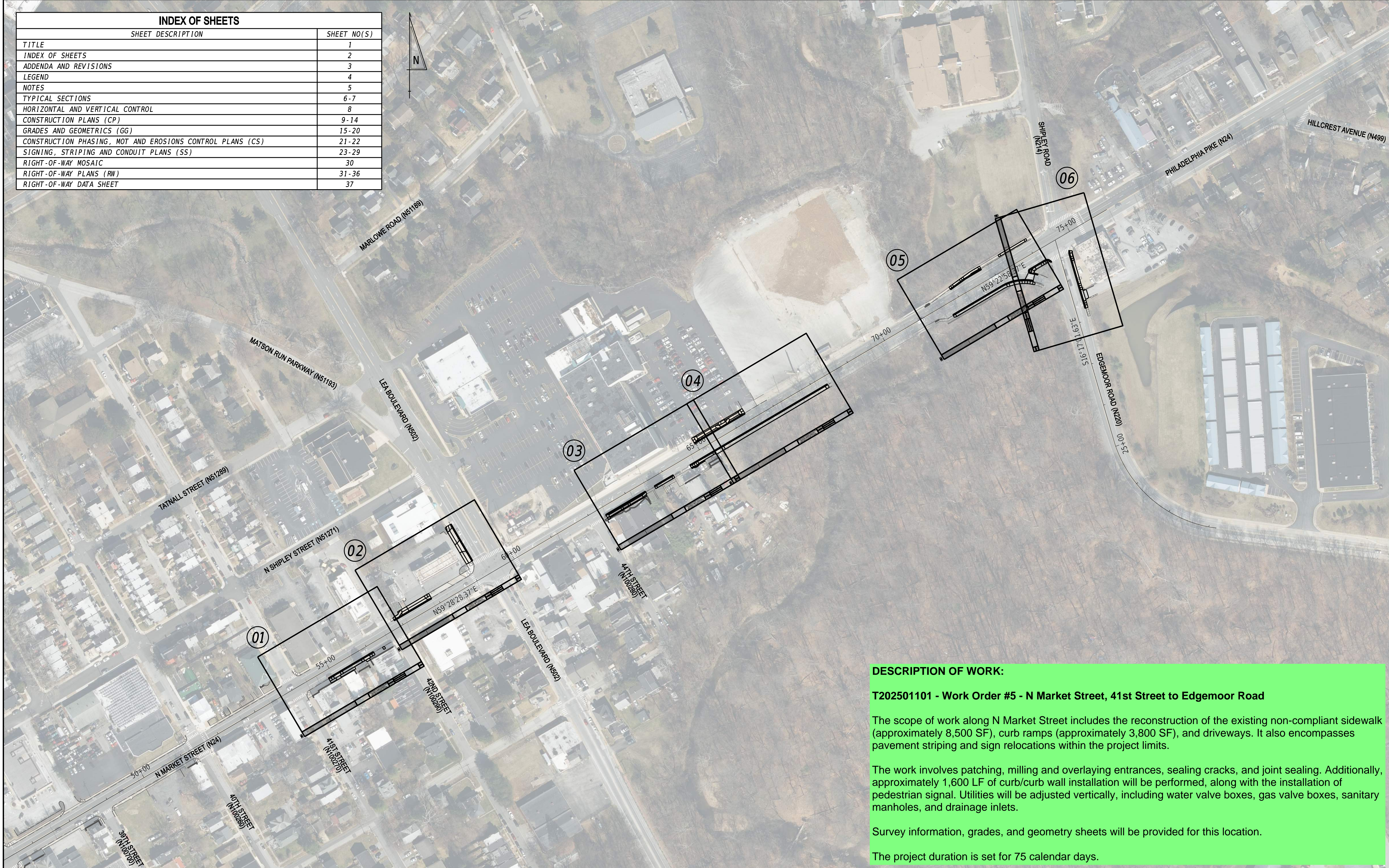
**PEDESTRIAN ACCESS ROUTES AND
SIDEWALK IMPROVEMENTS,
NEW CASTLE COUNTY FY23-26**

CONTRACT	BRIDGE NO.	N/A
T202301101	DESIGNED BY:	S. NICKEL
COUNTY	CHECKED BY:	M. STEIMER
NEW CASTLE		

**WORK ORDER #4
INDEX OF SHEETS**

SECTION
WM
SHEET NO.
2

INDEX OF SHEETS	
SHEET DESCRIPTION	SHEET NO(S)
TITLE	1
INDEX OF SHEETS	2
ADDENDA AND REVISIONS	3
LEGEND	4
NOTES	5
TYPICAL SECTIONS	6-7
HORIZONTAL AND VERTICAL CONTROL	8
CONSTRUCTION PLANS (CP)	9-14
GRADES AND GEOMETRICS (GG)	15-20
CONSTRUCTION PHASING, MOT AND EROSIONS CONTROL PLANS (CS)	21-22
SIGNING, STRIPING AND CONDUIT PLANS (SS)	23-29
RIGHT-OF-WAY MOSAIC	30
RIGHT-OF-WAY PLANS (RW)	31-36
RIGHT-OF-WAY DATA SHEET	37



DESCRIPTION OF WORK:

T202501101 - Work Order #5 - N Market Street, 41st Street to Edgemoor Road

The scope of work along N Market Street includes the reconstruction of the existing non-compliant sidewalk (approximately 8,500 SF), curb ramps (approximately 3,800 SF), and driveways. It also encompasses pavement striping and sign relocations within the project limits.

The work involves patching, milling and overlaying entrances, sealing cracks, and joint sealing. Additionally, approximately 1,600 LF of curb/curb wall installation will be performed, along with the installation of pedestrian signal. Utilities will be adjusted vertically, including water valve boxes, gas valve boxes, sanitary manholes, and drainage inlets.

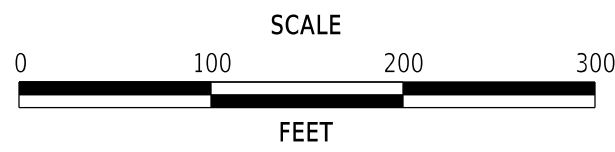
Survey information, grades, and geometry sheets will be provided for this location.

The project duration is set for 75 calendar days.

10/17/2024 11:56:35 PM \\PR01\219056.0002\Highways\Cadd\W045 [2025]101.dgn



ADDENDA / REVISIONS



**PEDESTRIAN ACCESS ROUTES AND
SIDEWALK IMPROVEMENTS,
NEW CASTLE COUNTY FY25-27**

CONTRACT T202501101	BRIDGE NO. N/A
COUNTY NEW CASTLE	DESIGNED BY: S. NICKEL
	CHECKED BY: C. YUSYPCHUK

**WORK ORDER #5
INDEX OF SHEETS**

SECTION WM
SHEET NO. 2

CURB RAMP SCHEDULE		
NO.	DESCRIPTION	PLAN SHEET NO.
1A	NON-COMPLIANT - IMPROVED BY STD. DETAIL	7, 19
1	NON-COMPLIANT - IMPROVED BY DESIGN	7, 19
2	NON-COMPLIANT - IMPROVED BY STD. DETAIL	8, 22
3	NON-COMPLIANT - IMPROVED BY STD. DETAIL	8, 22
4	NON-COMPLIANT - IMPROVED BY ADJ PROJECT	8
5	NON-COMPLIANT - IMPROVED BY ADJ PROJECT	8
6	NON-COMPLIANT - IMPROVED BY STD. DETAIL	12, 34
7	NON-COMPLIANT - IMPROVED BY STD. DETAIL	61
8	NON-COMPLIANT - IMPROVED BY STD. DETAIL	61
9	NON-COMPLIANT - IMPROVED BY STD. DETAIL	61
10	NON-COMPLIANT - IMPROVED BY STD. DETAIL	15
11	NON-COMPLIANT - IMPROVED BY STD. DETAIL	16, 62
12	NON-COMPLIANT - IMPROVED BY STD. DETAIL	16, 62
13	NON-COMPLIANT - IMPROVED BY DESIGN	16, 50, 62
14	NON-COMPLIANT - IMPROVED BY STD. DETAIL	16, 62
15	NON-COMPLIANT - IMPROVED BY STD. DETAIL	16, 62
16	NON-COMPLIANT - IMPROVED BY STD. DETAIL	17, 63
17	NON-COMPLIANT - IMPROVED BY DESIGN	17, 56, 63
18	NON-COMPLIANT - IMPROVED BY DESIGN	18, 59
19	NON-COMPLIANT - IMPROVED BY DESIGN	18, 59

INDEX OF SHEETS		
SECTION	SHEET DESCRIPTION	SHEET NO(S)
RKK	TITLE	1
RKK	INDEX OF SHEETS	2
RKK	ADDENDA AND REVISIONS	3
RKK	LEGEND	4
RKK	NOTES	5
RKK	HORIZONTAL AND VERTICAL CONTROL	6
RKK	CONSTRUCTION PLANS	7-18
RKK	GRADES AND GEOMETRICS	19-59
RKK	CONSTRUCTION PHASING, M.O.T. AND EROSION CONTROL PLANS	60-62
RKK	SIGNING AND STRIPING PLANS	63-65
RKK	RIGHT OF WAY PLANS	66-70
RKK	RIGHT OF WAY DATA SHEETS	71-72

DESCRIPTION OF WORK:

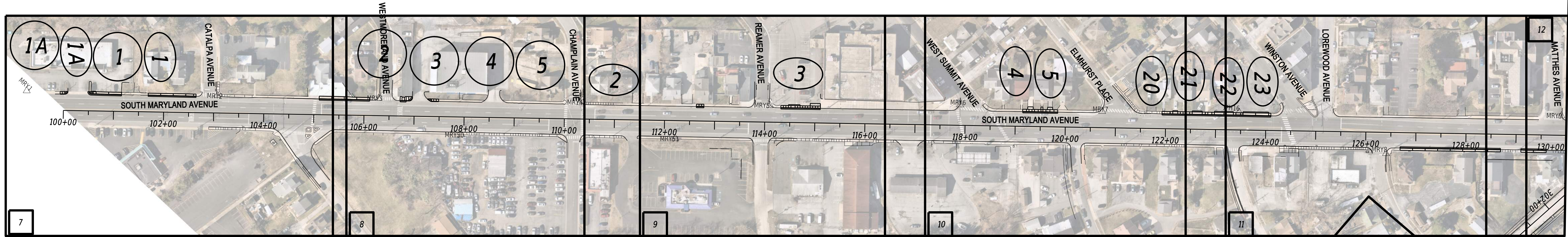
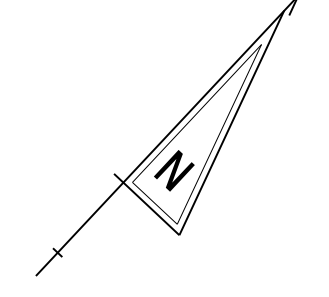
T202501101 - Work Order #6 - Maryland Avenue, Boxwood Plaza Entrance to Brookside Drive and DuPont Road, Valley Road to Richardson Lane and Race Street and Old DuPont Road

The scope of work along Maryland Avenue and DuPont Road includes the reconstruction of the existing non-compliant sidewalk (approximately 16,000 SF), curb ramps (approximately 5,000 SF), and driveways. It also encompasses pavement striping and sign relocations within the project limits.

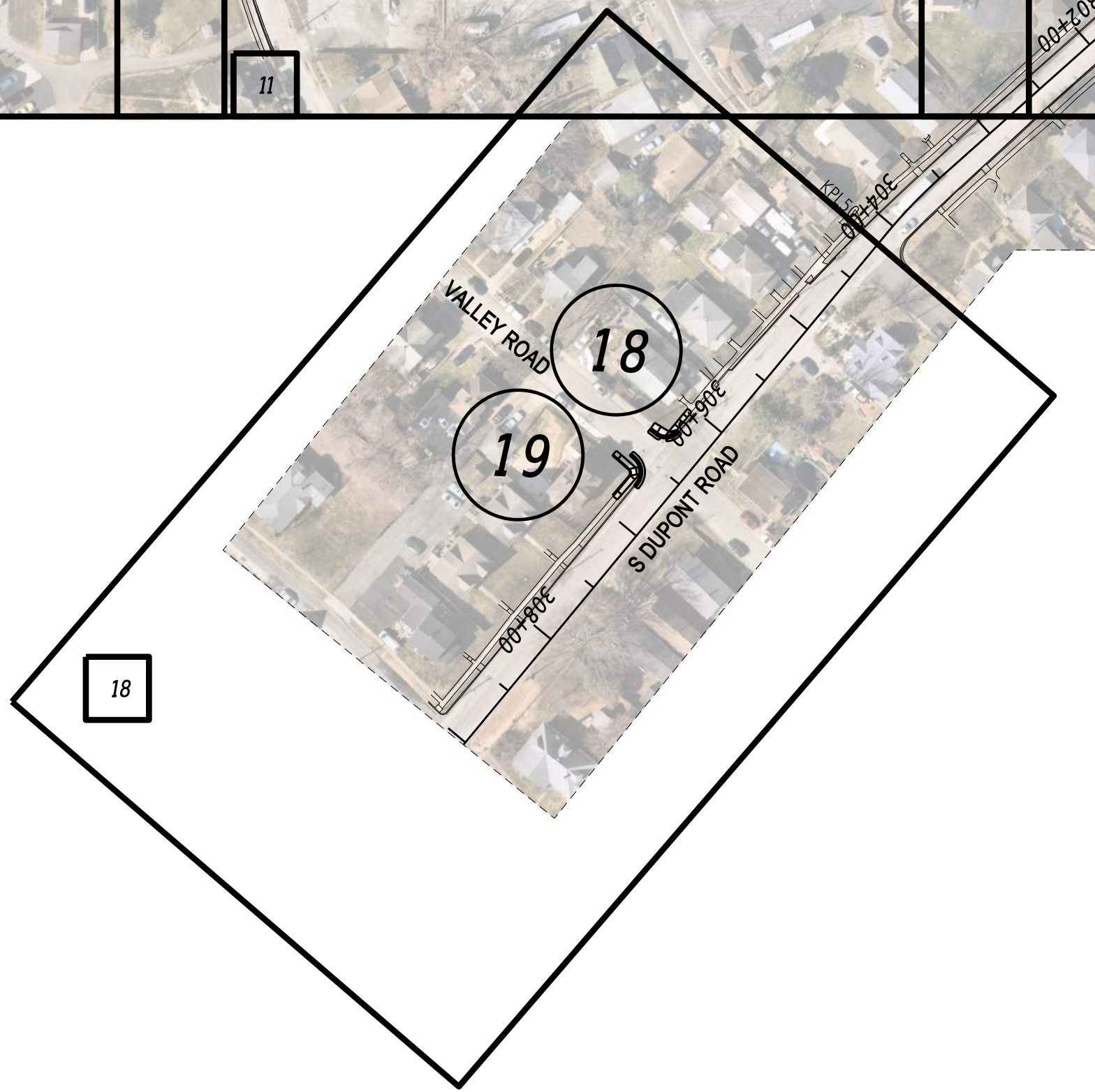
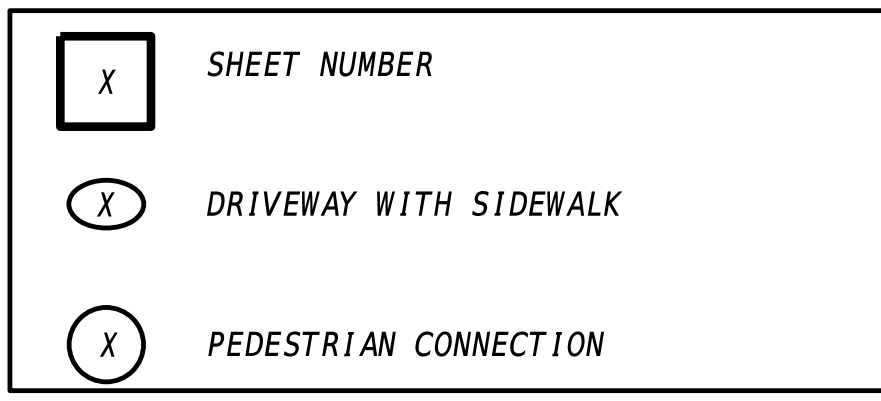
The work involves patching, milling and overlaying entrances, sealing cracks, and joint sealing. Additionally, approximately 3,400 LF of curb installation will be performed. Utilities will be adjusted vertically, including water valve boxes, gas valve boxes, sanitary manholes, and drainage inlets.

Survey information, grades, and geometry sheets will be provided for this location.

The project duration is set for 90 calendar days.

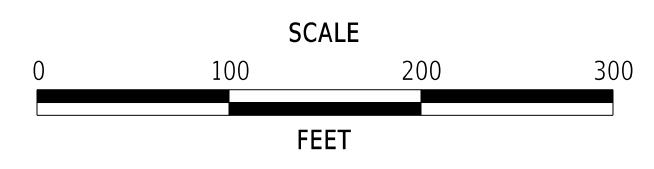


DRIVEWAY/SIDEWALK SCHEDULE		
NO.	DESCRIPTION	PLAN SHEET NO.
1A	NON-COMPLIANT - RPE NEEDED	7
1	NON-COMPLIANT - RPE NEEDED	7
2	NON-COMPLIANT - RPE NEEDED	9
3	DRIVEWAY IMPROVEMENTS - IMPROVED BY DESIGN	9, 24
4	DRIVEWAY IMPROVEMENTS - IMPROVED BY DESIGN	10, 25
5	DRIVEWAY IMPROVEMENTS - IMPROVED BY DESIGN	10, 25
6	DRIVEWAY IMPROVEMENTS - IMPROVED BY DESIGN	12, 34
7	NON-COMPLIANT - RPE NEEDED	13
7A	COMPLIANT - DO NOT DISTURB	13
8	NON-COMPLIANT - RPE NEEDED	13
9	DRIVEWAY IMPROVEMENTS - IMPROVED BY DESIGN	14, 40
10	DRIVEWAY IMPROVEMENTS - IMPROVED BY DESIGN	14, 40
11	DRIVEWAY IMPROVEMENTS - IMPROVED BY DESIGN	14, 41
12	DRIVEWAY IMPROVEMENTS - IMPROVED BY DESIGN	14, 41, 42
13	DRIVEWAY IMPROVEMENTS - IMPROVED BY DESIGN	13, 43
14	DRIVEWAY IMPROVEMENTS - IMPROVED BY DESIGN	13, 43, 44
15	NON-COMPLIANT - RPE NEEDED	16, 47
16	NON-COMPLIANT - RPE NEEDED	16, 47
17	DRIVEWAY IMPROVEMENTS - IMPROVED BY DESIGN	17, 55
18	DRIVEWAY IMPROVEMENTS - IMPROVED BY DESIGN	17, 57
19	DRIVEWAY IMPROVEMENTS - IMPROVED BY DESIGN	17, 58
20	DRIVEWAY IMPROVEMENTS - IMPROVED BY DESIGN	10, 26
21	DRIVEWAY IMPROVEMENTS - IMPROVED BY DESIGN	11, 26
22	DRIVEWAY IMPROVEMENTS - IMPROVED BY DESIGN	11, 27
23	DRIVEWAY IMPROVEMENTS - IMPROVED BY DESIGN	11, 27



15-OCT-2024 14:43 \\ad.rkk.com\is\Cloud\Projects\2019\19342_PARRS\svcs\Task_11_PAR_Support_Edgenoor_Road\CADD\Plans\Maryland_Ave\Display-ISO1_MdAve.dgn

ADDENDA / REVISIONS



OPEN END PEDESTRIAN ACCESS ROUTES AND SIDEWALK IMPROVEMENTS, NEW CASTLE COUNTY FY25-FY27

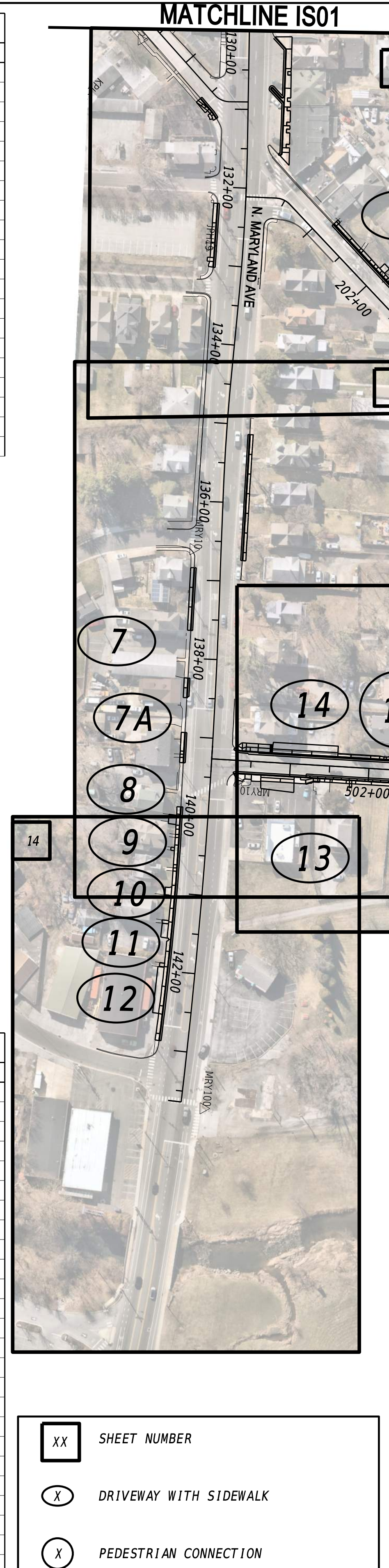
CONTRACT	T202501101	BRIDGE NO.	N/A
COUNTY	NEW CASTLE	DESIGNED BY:	L. WALSH
		CHECKED BY:	M. GOUDY

**WORK ORDER #6
INDEX OF SHEETS**

SECTION	RKK
SHEET NO.	6

CURB RAMP SCHEDULE		
NO.	DESCRIPTION	PLAN SHEET NO.
1A	NON-COMPLIANT - IMPROVED BY STD. DETAIL	7, 19
1	NON-COMPLIANT - IMPROVED BY DESIGN	7, 19
2	NON-COMPLIANT - IMPROVED BY STD. DETAIL	8, 22
3	NON-COMPLIANT - IMPROVED BY STD. DETAIL	8, 22
4	NON-COMPLIANT - IMPROVED BY ADJ PROJECT	8
5	NON-COMPLIANT - IMPROVED BY ADJ PROJECT	8
6	NON-COMPLIANT - IMPROVED BY STD. DETAIL	12, 34
7	NON-COMPLIANT - IMPROVED BY STD. DETAIL	61
8	NON-COMPLIANT - IMPROVED BY STD. DETAIL	61
9	NON-COMPLIANT - IMPROVED BY STD. DETAIL	61
10	NON-COMPLIANT - IMPROVED BY STD. DETAIL	15
11	NON-COMPLIANT - IMPROVED BY STD. DETAIL	16, 62
12	NON-COMPLIANT - IMPROVED BY STD. DETAIL	16, 62
13	NON-COMPLIANT - IMPROVED BY DESIGN	16, 50, 62
14	NON-COMPLIANT - IMPROVED BY STD. DETAIL	16, 62
15	NON-COMPLIANT - IMPROVED BY STD. DETAIL	16, 62
16	NON-COMPLIANT - IMPROVED BY STD. DETAIL	17, 63
17	NON-COMPLIANT - IMPROVED BY DESIGN	17, 56, 63
18	NON-COMPLIANT - IMPROVED BY DESIGN	18, 59
19	NON-COMPLIANT - IMPROVED BY DESIGN	18, 59

DRIVEWAY/SIDEWALK SCHEDULE		
NO.	DESCRIPTION	PLAN SHEET NO.
1A	NON-COMPLIANT - RPE NEEDED	7
1	NON-COMPLIANT - RPE NEEDED	7
2	NON-COMPLIANT - RPE NEEDED	9
3	DRIVEWAY IMPROVEMENTS - IMPROVED BY DESIGN	9, 24
4	DRIVEWAY IMPROVEMENTS - IMPROVED BY DESIGN	10, 25
5	DRIVEWAY IMPROVEMENTS - IMPROVED BY DESIGN	10, 25
6	DRIVEWAY IMPROVEMENTS - IMPROVED BY DESIGN	12, 34
7	NON-COMPLIANT - RPE NEEDED	13
7A	COMPLIANT - DO NOT DISTURB	13
8	NON-COMPLIANT - RPE NEEDED	13
9	DRIVEWAY IMPROVEMENTS - IMPROVED BY DESIGN	14, 40
10	DRIVEWAY IMPROVEMENTS - IMPROVED BY DESIGN	14, 40
11	DRIVEWAY IMPROVEMENTS - IMPROVED BY DESIGN	14, 41
12	DRIVEWAY IMPROVEMENTS - IMPROVED BY DESIGN	14, 41, 42
13	DRIVEWAY IMPROVEMENTS - IMPROVED BY DESIGN	13, 43
14	DRIVEWAY IMPROVEMENTS - IMPROVED BY DESIGN	13, 43, 44
15	NON-COMPLIANT - RPE NEEDED	16, 47
16	NON-COMPLIANT - RPE NEEDED	16, 47
17	DRIVEWAY IMPROVEMENTS - IMPROVED BY DESIGN	17, 55
18	DRIVEWAY IMPROVEMENTS - IMPROVED BY DESIGN	17, 57
19	DRIVEWAY IMPROVEMENTS - IMPROVED BY DESIGN	17, 58
20	DRIVEWAY IMPROVEMENTS - IMPROVED BY DESIGN	10, 26
21	DRIVEWAY IMPROVEMENTS - IMPROVED BY DESIGN	11, 26
22	DRIVEWAY IMPROVEMENTS - IMPROVED BY DESIGN	11, 27
23	DRIVEWAY IMPROVEMENTS - IMPROVED BY DESIGN	11, 27



DESCRIPTION OF WORK:

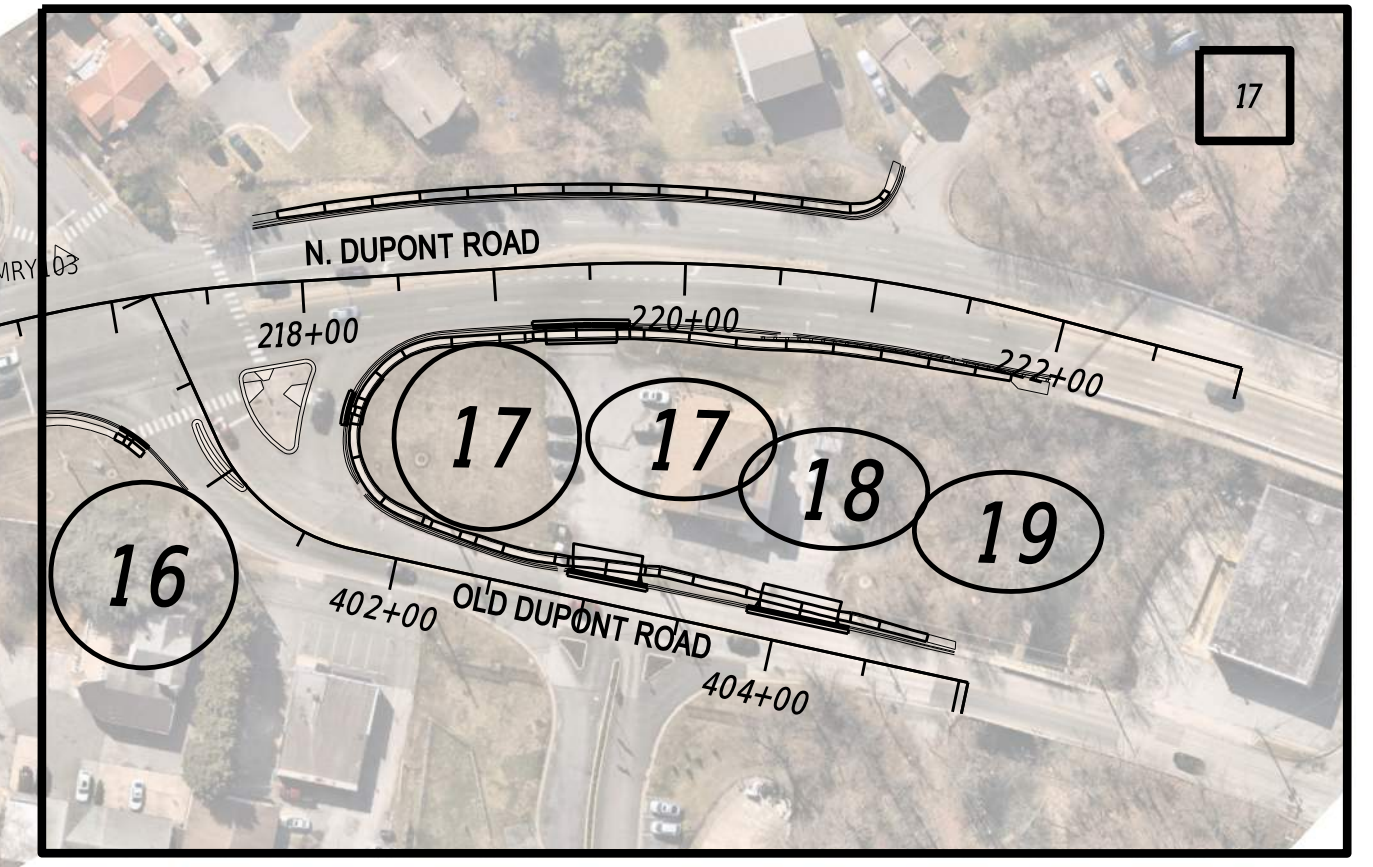
T202501101 - Work Order #6 - Maryland Avenue, Boxwood Plaza Entrance to Brookside Drive and DuPont Road, Valley Road to Richardson Lane and Race Street and Old DuPont Road

The scope of work along Maryland Avenue and DuPont Road includes the reconstruction of the existing non-compliant sidewalk (approximately 16,000 SF), curb ramps (approximately 5,000 SF), and driveways. It also encompasses pavement striping and sign relocations within the project limits.

The work involves patching, milling and overlaying entrances, sealing cracks, and joint sealing. Additionally, approximately 3,400 LF of curb installation will be performed. Utilities will be adjusted vertically, including water valve boxes, gas valve boxes, sanitary manholes, and drainage inlets.

Survey information, grades, and geometry sheets will be provided for this location.

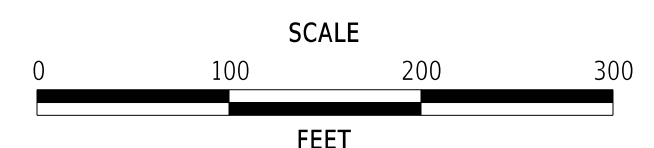
The project duration is set for 90 calendar days.



INDEX OF SHEETS		
SECTION	SHEET DESCRIPTION	SHEET NO(S)
RKK	TITLE	1
RKK	INDEX OF SHEETS	2
RKK	ADDENDA AND REVISIONS	3
RKK	LEGEND	4
RKK	NOTES	5
RKK	HORIZONTAL AND VERTICAL CONTROL	6
RKK	CONSTRUCTION PLANS	7-18
RKK	GRADES AND GEOMETRICS	19-59
RKK	CONSTRUCTION PHASING, M.O.T. AND EROSION CONTROL PLANS	60-62
RKK	SIGNING AND STRIPING PLANS	63-65
RKK	RIGHT OF WAY PLANS	66-70
RKK	RIGHT OF WAY DATA SHEETS	71-72

15-OCT-2024 14:46 \\ad.rkk.com\Cloud\Projects\2019\19342_PARRSRVCS\Task_11_PAR_Support_Edgenoor_Road\CADD\Plans\Maryland_Ave\Display-Is02_MdAve.dgn

ADDENDA / REVISIONS



OPEN END PEDESTRIAN ACCESS ROUTES AND SIDEWALK IMPROVEMENTS, NEW CASTLE COUNTY FY25-FY27

CONTRACT	T202501101	BRIDGE NO.	N/A
COUNTY	NEW CASTLE	DESIGNED BY:	L. WALSH
		CHECKED BY:	M. GOUDY

WORK ORDER #6 INDEX OF SHEETS

SECTION	RKK
SHEET NO.	7



DRIVEWAY/SIDEWALK SCHEDULE		
NO.	DESCRIPTION	PLAN SHEET NO.
1	DRIVEWAY IMPROVEMENTS - IMPROVED BY DESIGN	9
2	DRIVEWAY IMPROVEMENTS - IMPROVED BY DESIGN	12
3	NON-COMPLIANT DRIVEWAY - RPE NEEDED	13
4	DRIVEWAY IMPROVEMENTS - IMPROVED BY DESIGN	13, 14
5	NON-COMPLIANT DRIVEWAY - RPE NEEDED	14
6	NON-COMPLIANT DRIVEWAY - RPE NEEDED	14
7	DRIVEWAY IMPROVEMENTS - IMPROVED BY DESIGN	14, 15
8	DRIVEWAY IMPROVEMENTS - IMPROVED BY DESIGN	15
9	NON-COMPLIANT DRIVEWAY - RPE NEEDED	15
10	DRIVEWAY IMPROVEMENTS - IMPROVED BY DESIGN	15
11	DRIVEWAY IMPROVEMENTS - IMPROVED BY DESIGN	16
12	NON-COMPLIANT DRIVEWAY - RPE NEEDED	16
13	DRIVEWAY IMPROVEMENTS - IMPROVED BY DESIGN	16
14	NON-COMPLIANT DRIVEWAY - RPE NEEDED	17

CURB RAMP SCHEDULE		
NO.	DESCRIPTION	PLAN SHEET NO.
1	NON-COMPLIANT - SEE MERCHANTS SQUARE ENTRANCE PLAN	-
2	NON-COMPLIANT - SEE MERCHANTS SQUARE ENTRANCE PLAN	-
3	NON-COMPLIANT - IMPROVED BY DESIGN	7
4	NON-COMPLIANT - IMPROVED BY DESIGN	7
5	NON-COMPLIANT - IMPROVED BY DESIGN	7
6	NON-COMPLIANT - IMPROVED BY DESIGN	7
7	NON-COMPLIANT - IMPROVED BY DESIGN	8
8	NON-COMPLIANT - IMPROVED BY DESIGN	8
9	NON-COMPLIANT - IMPROVED BY DESIGN	8
10	NON-COMPLIANT - IMPROVED BY DESIGN	10
11	NON-COMPLIANT - IMPROVED BY DESIGN	10
12	NON-COMPLIANT - IMPROVED BY DESIGN	11
13	NON-COMPLIANT - IMPROVED BY DESIGN	11

DESCRIPTION OF WORK:

T202501101 - Work Order #7 - Edgemoor Road, Paladin Drive to Blue Rock Road and Brandywine Boulevard, Edgemoor Road to River Road and River Road

The scope of work along Edgemoor Road, Brandywine Boulevard, and River Road includes the reconstruction of the existing non-compliant sidewalk (approximately 3,200 SF), curb ramps (approximately 2,400 SF), and driveways. It also encompasses pavement striping, sign relocations, and signal upgrade within the project limits.

The work involves patching, milling and overlaying entrances, sealing cracks, and joint sealing. Additionally, approximately 1,000 LF of curb installation will be performed, along with the installation of pedestrian signal. Utilities will be adjusted vertically, including drainage manholes and drainage inlets.

Survey information, grades, and geometry sheets will be provided for this location.

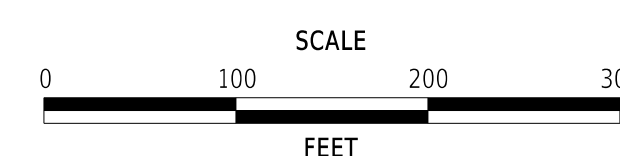
The project duration is set for 75 calendar days.

FOR PROPOSED IMPROVEMENTS, REFER TO CONTRACT T202001103 - EDGEMOOR ROAD BICYCLE AND PEDESTRIAN IMPROVEMENTS, GOVERNOR PRINTZ BLVD TO HAY ROAD

INDEX OF SHEETS		
SECTION	SHEET DESCRIPTION	SHEET NO(S)
RKK	TITLE	1
RKK	INDEX OF SHEETS	2
RKK	ADDENDA AND REVISIONS	3
RKK	LEGEND	4
RKK	NOTES	5
RKK	HORIZONTAL AND VERTICAL CONTROL	6
RKK	CONSTRUCTION PLANS	7-17
RKK	GRADES AND GEOMETRIC COORDINATES	18
RKK	CONSTRUCTION PHASING, M.O.T. AND EROSION CONTROL PLANS	19-21
RKK	SIGNING AND STRIPING PLANS	22
RKK	SIGNALIZATION PLANS	23
RKK	RIGHT OF WAY PLANS	24-26
RKK	RIGHT OF WAY DATA SHEET	27

- X SHEET NO.
- X DRIVEWAY WITH SIDEWALK
- X PEDESTRIAN CONNECTION

ADDENDA / REVISIONS



OPEN END PEDESTRIAN ACCESS ROUTES AND SIDEWALK IMPROVEMENTS, NEW CASTLE COUNTY FY25-FY-27

CONTRACT	BRIDGE NO.	N/A
T202501101	DESIGNED BY:	B. LEE & L. WALSH
COUNTY	CHECKED BY:	M. GOUDY
NEW CASTLE		

WORK ORDER #7 INDEX OF SHEETS

SECTION
RKK
SHEET NO.
8



DESCRIPTION OF WORK:

T202501101 - Work Order #8 - S Chapel Street, Pencader Plaza North Entrance to South Entrance

The scope of work along South Chapel Street includes the reconstruction of the existing non-compliant sidewalk (approximately 2,700 SF).

The work involves patching, sealing cracks, and joint sealing. Additionally, approximately 150 LF of curb and 80 LF of curb retaining wall installation will be performed, along with the installation of approximately 180 LF of pedestrian railing. Utilities will be adjusted vertically, including communication manholes.

Survey information, grades, and geometry sheets will **NOT** be provided for this location.

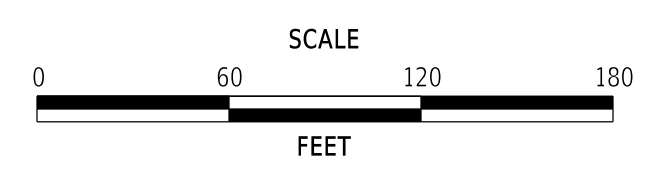
The project duration is set for 45 calendar days.

INDEX OF SHEETS	
SHEET DESCRIPTION	SHEET NO(S)
TITLE	1
INDEX OF SHEETS	2
ADDENDA AND REVISIONS	3
LEGEND	4
NOTES	5
TYPICAL SECTIONS	6
CONSTRUCTION PLANS (CP)	7
CONSTRUCTION DETAILS	8
CONSTRUCTION PHASING, MOT, AND EROSION CONTROL PLANS (CS)	9 - 10

10/24/2024 12:58:59 PM W:\PROJECTS\19056.0002\Highways\Cadd\WO#8 [2025]1501.dgn



ADDENDA / REVISIONS



**PEDESTRIAN ACCESS ROUTES AND
SIDEWALK IMPROVEMENTS,
NEW CASTLE COUNTY FY25-27**

CONTRACT	BRIDGE NO.	N/A
T202501101	DESIGNED BY:	J. NICKEL
COUNTY	CHECKED BY:	S. NICKEL
NEW CASTLE		

**WORK ORDER #8
INDEX OF SHEETS**

SECTION	WM
SHEET NO.	2